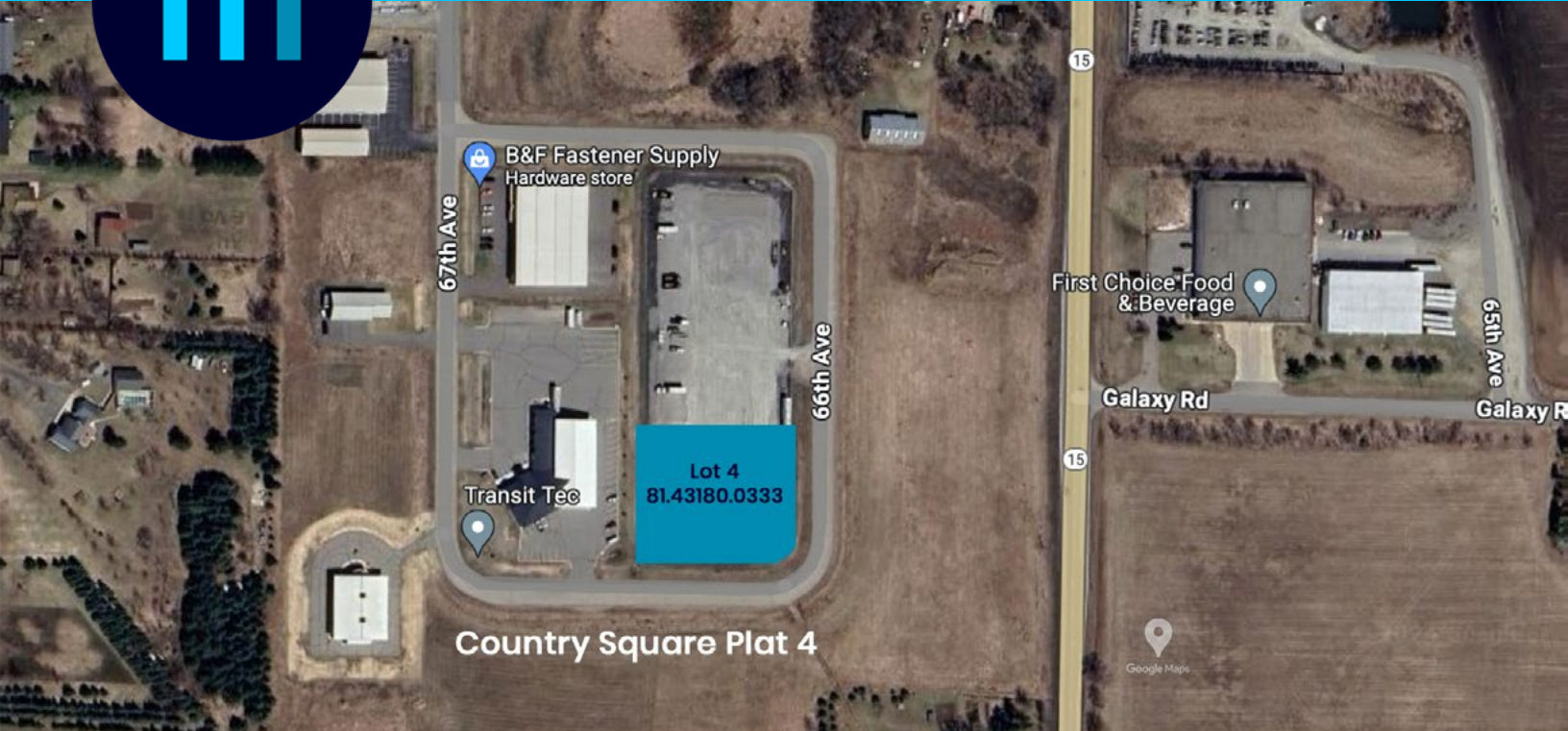




FOR SALE! • 1.39 ACRES • 60,548 SF



RED WILLOW LOT 4

23633 66th Ave S | St. Cloud, MN 56301

Industrial lot about an hour from Minneapolis in St. Cloud area, a manufacturing hub

- Topsoil improvements and Class 5
- Has electricity and is build ready
- Easy access to Highway 15, County Road 47/136, and I-94

Lot 4 Sale Price: \$136,000

Current Taxes: \$846

Curran Poganski

320-291-9297

curran@cegspaces.com

Jeff Salzbrun

612-428-3333

jeff@CEGspaces.com

Brian Potratz

612-269-7401

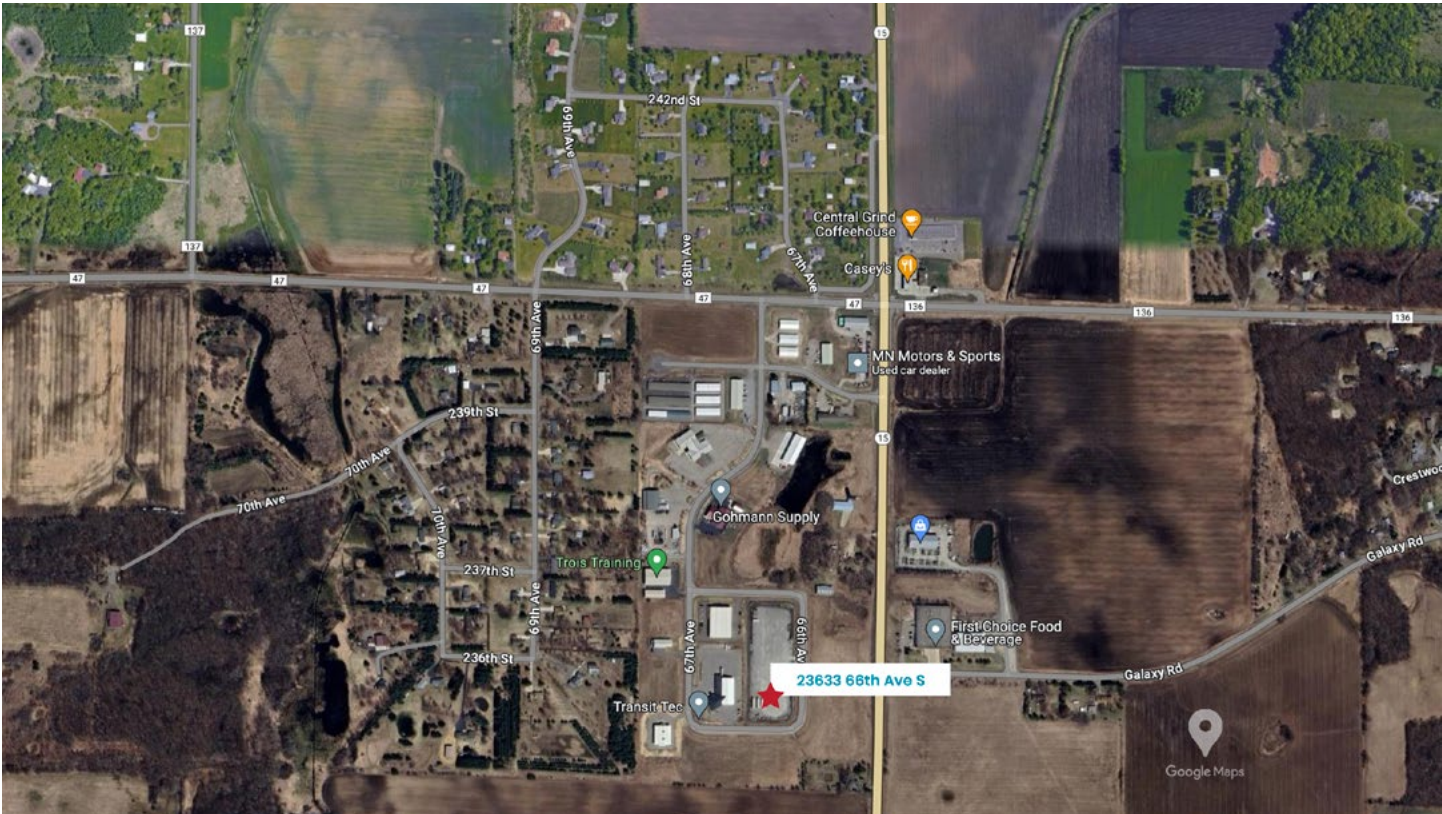
brian@CEGspaces.com

CEGspaces.com/red-willow

[GO TO MAP](#)

Commercial Equities Group
— Investment Real Estate Services

Build Ready Lot



Commercial Equities Group
Investment Real Estate Services

RED WILLOW LOT 4 • 60,548 SF
23633 66th Ave S | St. Cloud, MN 56301

Curran Poganski | 320-291-9297 | curran@CEGspaces.com